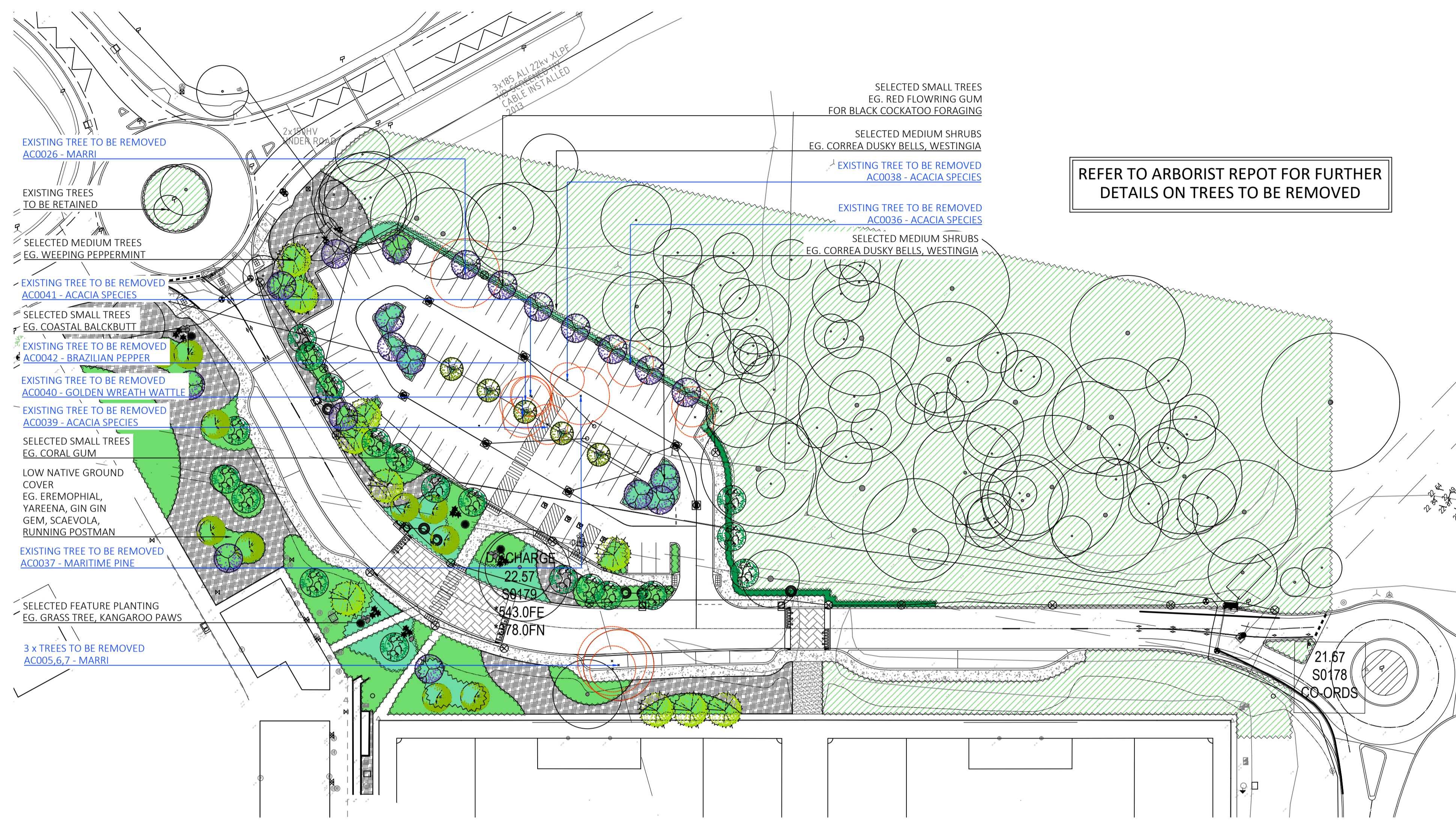


GENERAL NOTES:  
 1. THIS IS A CONCEPT PLAN ONLY.  
 2. ALL STRUCTURES SUBJECT TO ENGINEERING AND COUNCIL APPROVAL.  
 3. ALL MEASUREMENTS TO BE CHECKED PRIOR TO CONSTRUCTION.

REV	DATE	DWN	APP	DESCRIPTION
A	30.11.23	AC	KD	LANDSCAPE CONCEPT PLAN
B	12.02.24	AC	KD	LANDSCAPE CONCEPT PLAN
C	11.03.24	AC	KD	LANDSCAPE CONCEPT PLAN
D	15.03.24	AC	KD	LANDSCAPE CONCEPT PLAN
E	15.03.24	AC	KD	LANDSCAPE CONCEPT PLAN



### LEGEND

**TREES**

- EXISTING TREES TO BE REMOVED
- EXISTING TREES TO BE RETAINED
- SELECTED SMALL TREES EG. RED FLOWERING GUM CANOPY: 5m
- SELECTED SMALL TREES EG. LITTLE GHOST GUM CANOPY: 4m
- SELECTED MEDIUM TREES EG. WEEPING PEPPERMINT CANOPY: 6m
- SELECTED SMALL TREES EG. COASTAL BALCKBUTT CANOPY: 5m
- SELECTED SMALL TREES EG. CORAL GUM CANOPY: 5m

**FEATURE PLANTS**

- SELECTED FEATURE PLANTING + BOULDERS EG. GRASS TREE, KANGAROO PAW

**PLANTING**

- EXISTING PLANTING
- PLANTING TYPE 01 GROUNDCOVERS
- PLANTING TYPE 02 SHRUBS
- PLANTING TYPE 03 STRAPPY/MIXED

**MISC**

- ORGANIC MULCH EG. PINE BARK

- ### NOTES
- GENERAL**
    - DRAINAGE FROM THE RAISED PLANTER AREAS AND POTS TO BE PROVIDED BY BUILDER
    - ALL SCALES ARE AS NOTED AND TO SUIT A4 PAPER SIZE
    - THIS DRAWING SHALL NOT BE USED FOR CONSTRUCTION UNLESS REVISED 'O' ISSUED FOR CONSTRUCTION AND SIGNED AND APPROVED BY PROJECT MANAGER/SUPERINTENDENT.
    - PLANTING SETOUT SHOULD BE CHECKED BY SUPERINTENDENT BEFORE INSTALLATION BEGINS.
  - SOIL PREPARATION**
    - ALL AREAS ARE TO BE FINE GRADED EVENLY TO CONFORM TO KERB LEVELS AND SURROUNDING FINISHES.
    - SURFACES SHALL BE FREE FROM DEPRESSIONS, IRREGULARITIES AND NOTICEABLE CHANGES IN GRADE. GENERALLY, GRADES SHALL DEVIATE IN LEVEL NO GREATER THAN 20mm IN ONE LINEAR METRE.
    - PLANTED AREAS SHALL BE SPREAD WITH MIN. 50mm OF APPROVED STANDARD SOIL CONDITIONER THAT SHALL BE RIPPED INTO EXISTING SOIL TO A MIN. DEPTH OF 200mm.
    - RAISED PLANTER AREAS AND POTS SHALL BE INSTALLED WITH APPROPRIATE DRAINAGE CELL, AGGREGATE AND GEOTEXTILE MEMBRANE BELOW SOIL.
    - FILL SOIL TO RAISED PLANTER AREAS AND POTS TO BE APPROVED LIGHTWEIGHT LANDSCAPE MIX.
    - ALL SITE AND IMPORTED SOILS, POTTING MIX, SOIL CONDITIONERS AND MULCHES TO BE IN ACCORDANCE TO RELEVANT AUSTRALIAN STANDARDS.
  - PLANTING**
    - PLANTED AREAS SHALL BE MULCHED WITH 'PINE BARK' (WOODCHIP) MULCH UNLESS OTHERWISE STATED TO A MINIMUM DEPTH OF 75mm.
    - ADVANCED TREES SHALL BE STAKED W/ 50x50mm DIA HARDWOOD POSTS. POSTS SHALL BE PAINTED BLACK AND INSTALLED TO A MIN DEPTH OF 500mm. TREES SHALL BE SECURED TO POLES W/ RUBBER TIES IN FIGURE 8.
    - TREES PLANTED WITH IN 1000mm OF BOUNDARY WALLS AND/OR PARKING AREAS SHALL BE INSTALLED WITHIN 600mm DEPTH NYLEX ROOT BARRIER MEMBRANE. MEMBRANE SHALL BE INSTALLED AS PER MANUFACTURERS RECOMMENDATIONS.
    - FINAL PLANTING SHALL BE SELECTED FROM PLANTING PALETTE SCHEDULE.
    - PLANTS TO BE SET OUT IN EVEN SPACING TO FILL THE DESIGNATED AREAS.
    - IN AREAS OF MIXED PLANTING, SPECIES TO BE SPREAD OUT AT RANDOM, IN GROUPINGS OF 2 OR 3.
    - PLANTS SHALL BE SUPPLIED FROM AN INDUSTRY ACCREDITED WHOLESALE NURSERY. PLANTS SHALL BE IN APPROPRIATE SIZE FOR THE LISTED POT SIZE AND IN GOOD HEALTH.
    - PLANTING OF GRASS TREES REQUIRE A 6 MONTH MAINTENANCE PERIOD, INCLUDING REGULAR WATERING
  - IRRIGATION**
    - PLANTING TO GROUND LEVEL TO BE IRRIGATED VIA A FULLY AUTOMATIC SYSTEM FROM MAINS.
    - WATER PRESSURE TO HAVE A MINIMUM FLOW RATE OF 30L/PM AT 300KPA FROM THE WATER CONNECTION POINT (OR AS STIPULATED).
    - PLANTING TO COURTYARDS TO BE IRRIGATED VIA DIGITAL TAP TIMER (INDIVIDUAL CONNECTION POINTS TO BE PROVIDED).
    - PLANTING ON ALL UPPER LEVELS TO BE IRRIGATED VIA BATTERY OPERATED VALVE (CONNECTION POINTS TO BE PROVIDED TO EACH LEVEL).
    - CONTROLLER TO BE LOCATED IN SERVICE ROOM (OR AS SHOWN ON IRRIGATION DETAILS).
    - SLEEVES BENEATH PAVED SURFACES AND TO RAISED PLANTING AREAS TO BE PROVIDED BY OTHERS.
    - IRRIGATION TO GARDEN BEDS TO BE NETAFIM TECHLINE. SUB SURFACE IRRIGATION. INSTALLED TO MANUFACTURERS SPECIFICATION. IRRIGATION TO TURN TO BE POP UP SPRINKLERS, MP ROTATORS OR SIMILAR. IRRIGATION TO TREES TO BE BUBBLERS, TORO FLOOD BUBBLERS OR SIMILAR.
    - ASCM DRAWINGS, MANUALS AND 12 MONTH WARRANTY SHALL BE SUPPLIED BY THE IRRIGATION CONTRACTOR TO THE CLIENT UPON PRACTICAL COMPLETION.
    - PLEASE REFER TO IRRIGATION DRAWING SET FOR FINAL LAYOUT AND SCHEDULE (TO FUTURE DETAIL).

### PLANTING PALETTE

Symbol	Species	Common Name	Quantities	Size
<b>Trees:</b>				
AGOfie	Agonis flexuosa 'Burgundy'	Burgundy Weeping Peppermint	As Shown	100L
CORfic	Corymbia ficifolia (grafted)	WA Red Flowering Gum	As Shown	100L
EUCod	Eucalyptus todiana	Coastal Blackbutt	As Shown	100L
EUCor	Eucalyptus torquata	Coral Gum	As Shown	100L
EUCvic	Eucalyptus victrix	Little Ghost Gum	As Shown	100L
<b>Shrubs and Groundcovers:</b>				
ADEcun	Adenanthos cuneatus	Coral Carpet	3/m2	140mm
CHOsto	Schorizema cordatum	Heart-leaf Flame Pea	3/m2	140mm
CONcan	Conostylis candidans	Grey Cottonheads	3/m2	140mm
CORdus	Correa 'Dusky Bells'	Dusky Bells	2/1m	200mm
DIArev	Dianella revoluta	Blue Flax-Lily	3/m2	140mm
ERegab	Eremophila glabra	Emu Bush	3/m2	140mm
GREgin	Grevillea 'Gin Gin Gem'	Gin Gin Gem	3/m2	140mm
HEMpun	Hemiantra pungens	Snake Bush	3/m2	140mm
HIBsca	Hibbertia scandens	Snake Vine	3/m2	140mm
HYProb	Hypocalymma robustum	Swan River Myrtle	3/m2	140mm
KENpro	Kennedia prostrata	Running Postman	3/m2	140mm
LELibro	Leucophyta brownii	Silver Cushion Bush	3/m2	140mm
LOMhys	Lomandra hystrix	Slender Mat Rush	3/m2	200mm
LOMlon	Lomandra longifolia	Basket Grass	3/m2	200mm
OLEaxi	Olearia axillaris	Coastal Grass	3/m2	200mm
PIMfer	Pimelea ferruginea	Rice Flower	2/1m	200mm
MYOpar	Myoporum parvifolium 'Yareena'	Yareena	3/m2	140mm
SCAhum	Scaevola humilis 'Purple Fusion'	Fan Flower	3/m2	140mm
WESgre	Westringia fruticosa	Coastal Rosemary	2/1m	140mm
<b>Feature Plants:</b>				
ANIfia	Anigozanthos flavidus	Kangaroo Paw	As Shown	12L
XANpre	Xanthoria Preissii	Grass Tree	As Shown	12L

